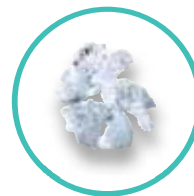


TM 450



Produzione 24h* Production 24h	440 kg - 970 lbs
Condensazione Cooling system	A - W
Dim. pebble mm *** Size pebble mm	16,5 x 18 x 11
Consumo elettrico** Electrical consumption	1700 W
Dimensioni (LxPxH) Sizes (WxDxH)	560 x 569 x 695 mm 22 x 22 6/16 x 27 6/16 "
Peso netto Net weight	102 kg - 225 lbs
Fusibile Fuse	16 A
Bin utilizzabile Usable bin	Bin 240PE - Bin 110 Bin 200 - Bin 350 Bin 550V DS - RB 100 DRB 100 / 500 / 1200

Ice Flakes



GB Series



GB 601



Produzione 24h* Production 24h	60 kg - 132 lbs
Capacità contenitore Storage Capacity	fino a/up to: 9 kg - 20 lbs
Condensazione Cooling system	A - W
Consumo elettrico** Electrical consumption	420 W
Dimensioni (LxPxH) * Sizes (WxDxH)	450 x 620 x 680 mm 17 11/16 x 24 7/16 x 26 12/16 "
Peso netto Net weight	56 kg - 123 lbs
Fusibile Fuse	10 A

GB 902



Produzione 24h* Production 24h	95 kg - 209 lbs
Capacità contenitore Storage Capacity	fino a/up to: 20 kg - 44 lbs
Condensazione Cooling system	A - W
Consumo elettrico** Electrical consumption	550 W
Dimensioni (LxPxH) ** Sizes (WxDxH)	500 x 660 x 690 mm 19 11/16 x 26 x 27 3/16 "
Peso netto Net weight	59 kg - 130 lbs
Fusibile Fuse	10 A

* Temp. ambiente / Ambient temp. +21° C - Temp. acqua / Water temp. +15° C

** Temp. ambiente / Ambient temp. +43° C

*** Misure indicative / Approximate size

* Piedino / Foot 5 mm

** Piedino regolabile / Adjustable foot 110-150 mm

GB 903

Produzione 24h* 95 kg - 209 lbs
Production 24h

Capacità contenitore fino a/up to: 30 kg - 66 lbs
Storage Capacity

Condensazione A - W
Cooling system

Consumo elettrico** 550 W
Electrical consumption

Dimensioni (LxPxH) ** 500 x 660 x 800 mm
Sizes (WxDxH) 19 11/16 x 26 x 31 8/16 "

Peso netto 67 kg - 148 lbs
Net weight

Fusibile 10 A
Fuse

GB 1540

Produzione 24h* 155 kg - 342 lbs
Production 24h

Capacità contenitore fino a/up to: 40 kg - 88 lbs
Storage Capacity

Condensazione A - W
Cooling system

Consumo elettrico** 650 W
Electrical consumption

Dimensioni (LxPxH) ** 738 x 690 x 920 mm
Sizes (WxDxH) 29 1/16 x 27 3/16 x 36 4/16 "

Peso netto 85 kg - 187 lbs
Net weight

Fusibile 10 A
Fuse

GB 1555

Produzione 24h* 155 kg - 342 lbs
Production 24h

Capacità contenitore fino a/up to: 55 kg - 121 lbs
Storage Capacity

Condensazione A - W
Cooling system

Consumo elettrico** 650 W
Electrical consumption

Dimensioni (LxPxH) ** 738 x 690 x 1020 mm
Sizes (WxDxH) 29 1/16 x 27 3/16 x 40 3/16 "

Peso netto 94 kg - 207 lbs
Net weight

Fusibile 10 A
Fuse

G Series**G 160**

Produzione 24h* 160 kg - 353 lbs
Production 24h

Condensazione A - W
Cooling system

Consumo elettrico** 650 W
Electrical consumption

Dimensioni (LxPxH) 560 x 569 x 600 mm
Sizes (WxDxH) 22 x 22 6/16 x 23 10/16 "

Peso netto 63 kg - 139 lbs
Net weight

Fusibile 10 A
Fuse

Bin utilizzabile Bin 240PE - Bin 110
Usable bin Bin 200 - RB 100

G 280

Produzione 24h* 280 kg - 617 lbs
Production 24h

Condensazione A - W
Cooling system

Consumo elettrico** 1050 W
Electrical consumption

Dimensioni (LxPxH) 560 x 569 x 695 mm
Sizes (WxDxH) 22 x 22 6/16 x 27 6/16 "

Peso netto 83 kg - 183 lbs
Net weight

Fusibile 10 A
Fuse

Bin utilizzabile Bin 240PE - Bin 110
Usable bin Bin 200 - Bin 350 - RB 100
DRB 100

* Temp. ambiente / Ambient temp. +21° C - Temp. acqua / Water temp. +15° C

** Temp. ambiente / Ambient temp. +43° C

** Piedino regolabile / Adjustable foot 110-150 mm

G 510



Produzione 24h* 510 kg - 1124 lbs
Production 24h

Condensazione A - W
Cooling system

Consumo elettrico** 1700 W
Electrical consumption

Dimensioni (LxPxH) 560 x 569 x 695 mm
Sizes (WxDxH) 22 x 22 6/16 x 27 6/16 "

Peso netto 102 kg - 225 lbs
Net weight

Fusibile 16 A
Fuse

Bin utilizzabile Bin 240PE - Bin 110
Usable bin Bin 200 - Bin 350
Bin 550V DS - RB 100
DRB 100 / 500 / 1200

G 1000



Produzione 24h* 1000 kg - 2205 lbs
Production 24h

Condensazione A - W
Cooling system

Consumo elettrico** 3200 W
Electrical consumption

Dimensioni (LxPxH) 934 x 684 x 700 mm
Sizes (WxDxH) 36 12/16 x 26 15/16 x 27 9/16 "

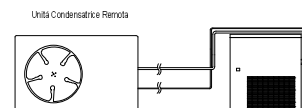
Peso netto 167 kg - 368 lbs
Net weight

Fusibile 16 A
Fuse

Bin utilizzabile Bin 550V DS
Usable bin DRB 500 / 1200

G 510 Split

G 700 Split CO₂



Produzione 24h* 510 kg - 1124 lbs | 720 kg - 1587 lbs
Production 24h

Potenza frigorifera 2300W (evap. temp. -18°C)
Cooling capacity 2300 W (evap. temp. -18°C)

Consumo elettrico** 175 W
Electrical consumption

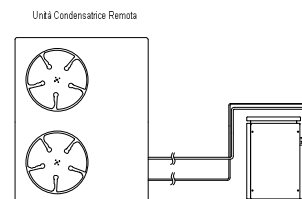
Dimensioni (LxPxH) 560 x 569 x 695 mm
Sizes (WxDxH) 22 x 22 6/16 x 27 6/16 "

Peso netto - Net weight 67 kg - 148 lbs

Bin utilizzabile Bin 240PE - Bin 110 - Bin 200 - Bin 350
Usable bin Bin 550V DS - RB 100 - DRB 100 / 500 / 1200

G 1000 Split

G 1400 Split CO₂



Produzione 24h* 1000 kg - 2205 lbs | 1400 kg - 3086 lbs
Production 24h

Potenza frigorifera 4600W (evap. temp. -18°C)
Cooling capacity 4600 W (evap. temp. -18°C)

Consumo elettrico** 350 W
Electrical consumption

Dimensioni (LxPxH) 765 x 600 x 695 mm
Sizes (WxDxH) 30 2/16 x 23 10/16 x 27 6/16 "

Peso netto - Net weight 118 kg - 260 lbs

Bin utilizzabile Bin 550V DS - DRB 500 / 1200
Usable bin

* Temp. ambiente / Ambient temp. +21° C - Temp. acqua / Water temp. +15° C

** Temp. ambiente / Ambient temp. +43° C